

Efficient Evaporation and Concentration of Chromatography Samples



In chromatography, a large number of samples are pooled in bigger flasks or evaporated individually. Either way, sequential evaporation with a rotary evaporator is the rate determining step of the process. We present a parallel evaporator, Syncore®, which significantly increases the sample throughput in evaporation and concentration. Due to its range of exchangeable racks, all compatible with the Fraction Collector, 4 to 96 samples ranging in volume from 0.5 to 500 ml can be evaporated simultaneously.

Advantages of the Syncore® parallel evaporator:

- **fast:** simultaneous evaporation of up to 96 samples; with its heatable vacuum cover high-boiling solvents can be processed
- **safe:** no risk of cross-contamination from adjacent samples or from the instrument itself
- **soft:** evaporation of temperature-sensitive compounds using unique vessels having a locally cooled appendix
- **automatic:** no manual vacuum settings required with the sophisticated Vacuum Controller V-855
- **efficient:** no sample handling due to sample rack compatibility with the Fraction Collector
- **modular:** different racks for different demands



Pooling of chromatography samples in 6 x 250 ml vessels.

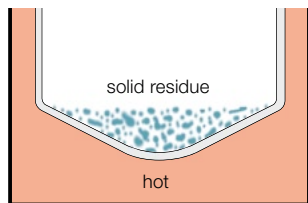
Stand: 29.05.2006 en

Evaporation to dryness: Syncore® Polyvap

- Quick and safe: Each position of the Polyvap rack is uniformly heated. Individual sample connection eliminates the possibility of cross-contamination.

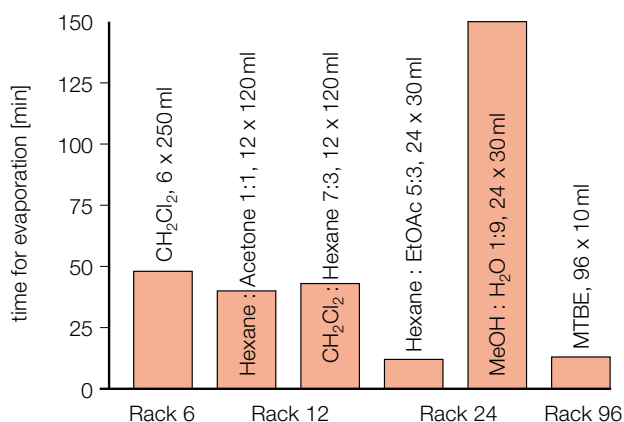


Individual sample connection.



Schematic depiction of one Polyvap rack position.

- Evaporation rates: Selected performance data for different racks and solvents.



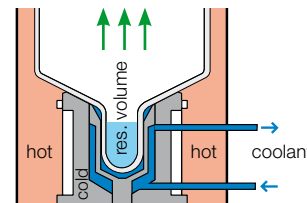
Conditions: Parallel evaporation using temperature settings of 42°C (rack) and 50°C (vacuum cover). Optimized vacuum gradient for each solvent controlled by the Vacuum Controller V-855. The condenser is cooled with the Chiller B-740/14.

Concentration to residual volumes: Syncore® Analyst

- Defined residual volumes: The Analyst racks consist of a locally cooled part which allows sample concentration in a small appendix. Thus, temperature-sensitive compounds can also be evaporated smoothly.

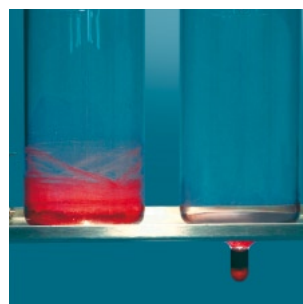


Analyst tubes with appendix.

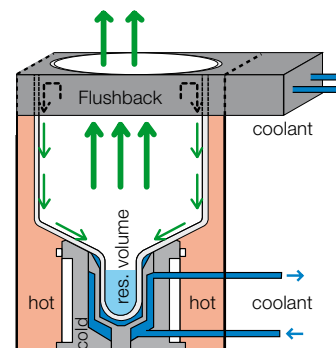


Schematic depiction of the Analyst rack with a cooling zone.

- Flushback effect: With the optional Flushback Module the vapor is partially condensed at the top of the vessels. Hence the glass is continuously rinsed resulting in higher recovery rates of the sample.



Concentration to dryness (left, Polyvap) and to a residual volume with Flushback Module (right, Analyst).



Schematic depiction of the Analyst rack with the Flushback Module.

Modularity

The Syncore® Analyst and Polyvap accommodate different exchangeable racks varying in sample numbers, working volume and design principle.

sample format	volume range	order-no. Polyvap rack	order-no. Analyst rack	order-no. Vacuum Cover
4	50–500 ml	47790	47794	38245
6	25–250 ml	47770	47777	38246
12	5–120 ml	40900	46000	40910
24	2–30 ml	38188	*	40920
48	1–20 ml	42855	*	42850
96	0.5–10 ml	38277	*	40930

* on request

BÜCHI Labortechnik AG
Postfach
9230 Flawil 1
Schweiz
Tel. +41 71 394 63 63
Fax +41 71 394 65 65
buchi@buchi.com
www.buchi.com

BÜCHI Labortechnik GmbH
Postfach 10 03 51
45003 Essen
Deutschland
Tel. +49 201 747 490
Fax +49 201 237 082
deutschland@buchi.com
www.buechigmbh.de

BÜCHI Labortechnik GmbH
Branch Office Netherlands
Postbus 142
3340 AC Hendrik-Ido-Ambacht
The Netherlands
Tel. +31 78 684 94 29
Fax +31 78 684 94 30
netherlands@buchi.com
www.buchi.nl

BÜCHI Italia s.r.l.
Centro Direzionale, Milano Fiori
Pal. A-4, Strada 4
20090 Assago (MI)
Italia
Tel. +39 02 824 50 11
Fax +39 02 57 51 28 55
italia@buchi.com
www.buchi.it

BUCHI (THAILAND) Ltd.
ASEAN Competence Center
300 Phaholyothin Road
Samsennai, Phayathai
Bangkok 10400
Thailand
Tel. +66 2 278 54 95
Fax +66 2 279 05 48
bacc@buchi.com
www.buchi.com

BUCHI SMP
Services Private Ltd.
201, Magnum Opus
Shantinagar Industrial Area
Vakola, Santacruz (East)
Mumbai 400 055,
India
Tel. +91 22 56 98 94 50
Fax +91 22 56 98 94 52
smp@buchi.com
www.buchi.com

BUCHI Analytical Inc.
19 Lukens Drive
New Castle
Delaware 19720
USA
Tel. +1 302 652 3000
Fax +1 302 652 8777
us-sales@buchi.com
www.buchi-analytical.com

BUCHI Hong Kong Ltd.
1305, Hang Seng Mongkok Bldg.
677 Nathan Road
Kowloon, Hong Kong
China
Tel. +852 2389 2772
Fax +852 2389 2774
china@buchi.com
www.buchi.com

Nihon BUCHI K.K.
3F IMON Bldg.,
2-7-17 Ikenohata, Taito-ku,
Tokyo 110-0008
Japan
Tel. +81 3 3821 4777
Fax +81 3 3821 4555
nihon@buchi.com
www.nihon-buchi.co.jp

BUCHI UK Ltd
5 Whitegate Business Centre
Jardine Way
(off) Broadway
Chadderton
Oldham OL9 9QL
United Kingdom
Tel. +44 161 633 1000
Fax +44 161 633 1007
uk@buchi.com
www.buchi.co.uk

BUCHI Sarl
5, rue du Pont des Halles
Z.A. du Delta
94656 Rungis Cedex
France
Tél. +33 1 56 70 62 50
Fax +33 1 46 86 00 31
france@buchi.com
www.buchi.fr

We are represented by more than 100 distribution partners worldwide. Find your local representative at

www.buchi.com

Quality in your hands